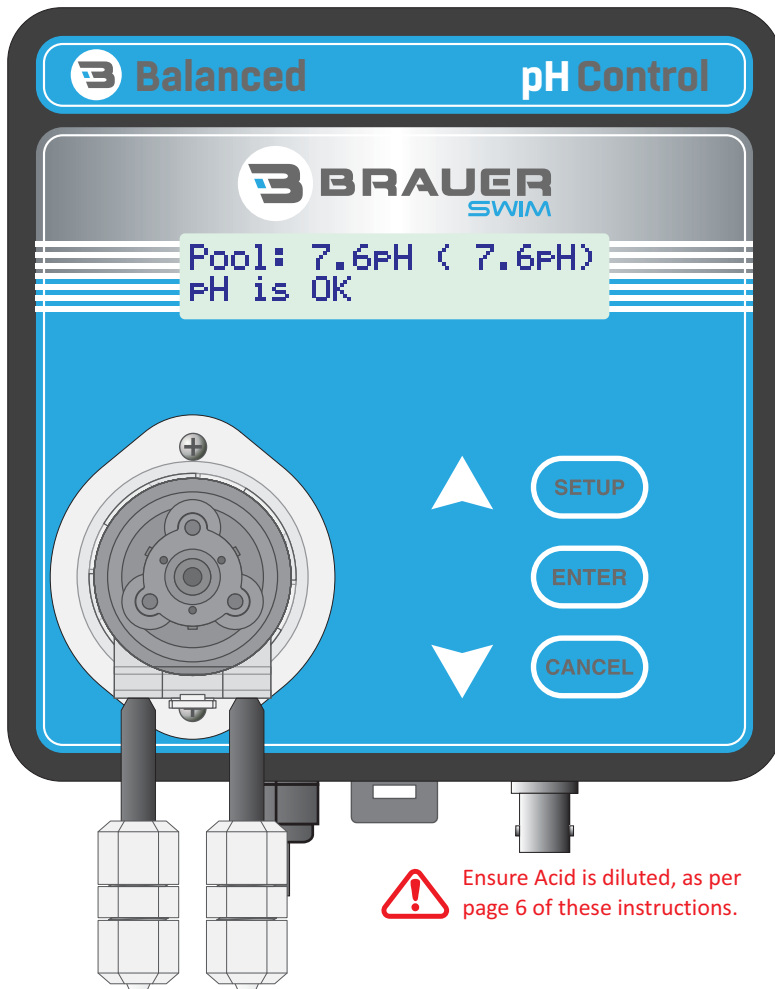


Instruction Manual



Ensure Acid is diluted, as per page 6 of these instructions.



Thank you for purchasing the B Balanced pH Control system by Brauer Swim.

The **B Balanced** range has been designed for reliability and long service life. Please be sure to follow the instructions in this manual to get the best performance and life from your equipment.

The **B Balanced pH Control** is easy to operate, and this manual will explain each of the steps clearly. Troubleshooting and hints are also included to allow you to get the most from your unit. If you require assistance at any stage, please contact your Brauer Swim Authorised Dealer.

	Page
CAUTIONS & WARNINGS.....	3
GETTING TO KNOW YOUR B BALANCED pH CONTROL.....	4
B BALANCED pH CONTROL DISPLAY.....	5
ACID SAFETY & DILUTION.....	6
pH TEE INSTALLATION.....	7
B BALANCED pH CONTROL INSTALLATION.....	8
TUBE INSTALLATION.....	9
pH SENSOR INSTALLATION.....	10
COMPLETED INSTALLATION (ILLUSTRATION).....	10
CONNECT POWER LEAD.....	10
B BALANCED pH CONTROL SETTINGS.....	11
Setting the Mode.....	11
Adding a Quick Dose of Chemical.....	11
Setting the pH Set Point.....	12
Pool Size Setting.....	12
Enabling or Disabling the pH Alert Function.....	13
When the pH Alert is Triggered.....	13
pH SENSOR CALIBRATION.....	14
Inline Calibration.....	14
pH7.0 Buffer Calibration.....	15
CHANGING PUMP CASSETTE.....	16
TROUBLESHOOTING.....	17
WARRANTY.....	19
CONTACT US.....	19

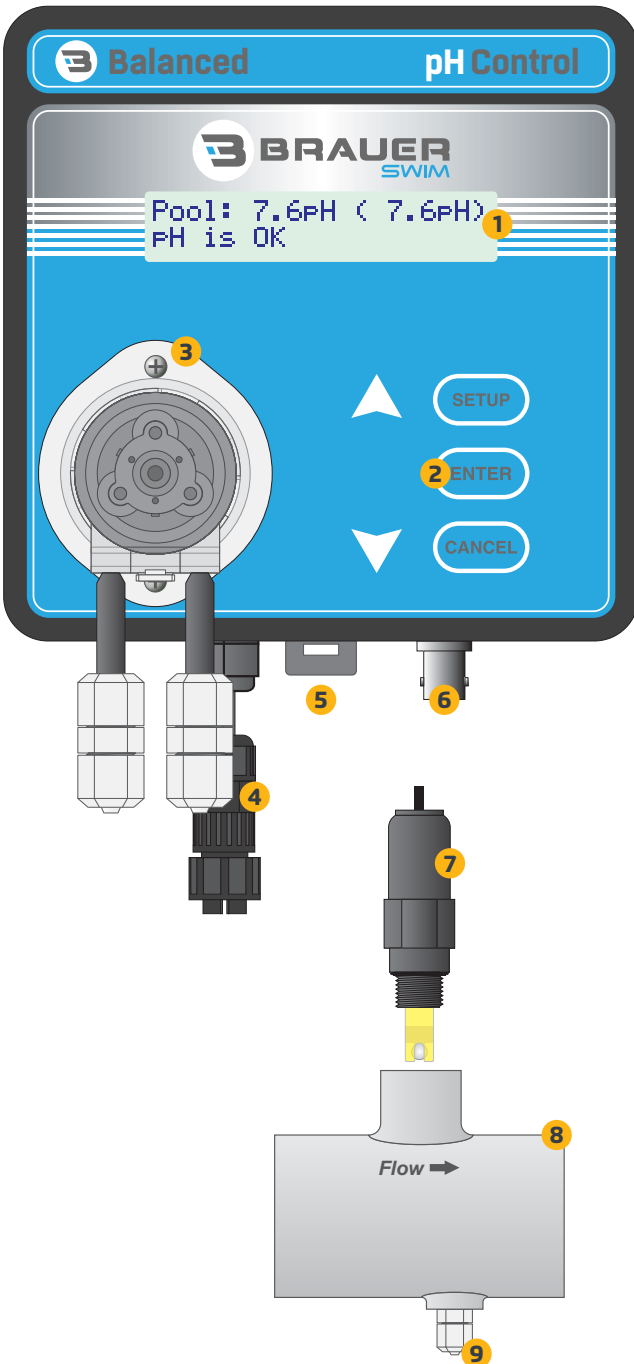


Cautions & Warnings

- Please read the instructions fully and keep this manual on hand whenever operating or maintaining your **B Balanced pH Control**.
- **Always use diluted acid. Concentrated acid will cause damage to the squeeze tube and fittings, which are not covered by the warranty.**
See page 6 for information on the safe handling and dilution of acid.
- DO NOT add acid into a drum that previously contained liquid chlorine until that drum has been rinsed three times with fresh water. Ensure that the label on the drum indicates that the drum contains acid.
- As for all pool equipment and chemicals, the **B Balanced pH Control** should be installed out of reach of children. Children must not have access to operating the **B Balanced pH Control** without adult supervision.
- Although the **B Balanced pH Control** has a weather resistant design, its service life will be considerably longer if it is not exposed to direct sunlight and rain. Wear and tear from direct exposure to the elements is not covered by the warranty.
- Do not allow grass or weeds to grow around the **B Balanced pH Control**, or the tubing and cables to prevent accidental damage from garden trimming equipment.
- Any damaged cables must be replaced immediately to prevent electrical shock.
- Unplug the **B Balanced pH Control** power lead before servicing or changing the dosing pump cassette.
- The **B Balanced pH Control** must be serviced only by an authorised service agent. Please contact your Brauer Swim Authorised Dealer for details. Despite being low-voltage powered, opening the unit may still cause an electric shock, which can cause injury or death.



Getting to know your B Balanced pH Control



1 DISPLAY

User-friendly plain text menu and help system.

2 KEYPAD

Used for setup and maintenance of your **B Balanced pH Control**.

3 DOSING PUMP

High quality, low maintenance peristaltic dosing pump.

4 POWER CONNECTOR

IP65 Waterproof connector plugs into Brauer Swim systems that are equipped with the matching outlet.

5 MOUNTING CLIP

Pull the clip downwards when mounting the **B Balanced pH Control** to the mounting rail, or to unclip when removing.

6 pH SENSOR SOCKET

Connect the pH Sensor to the BNC pH Sensor socket.

7 pH SENSOR

Commercial quality pH Sensor screws into pH Tee to firm hand tightness.

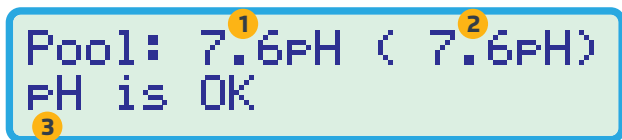
8 pH TEE

A single pH Tee for installing the pH Sensor and non-return injection valve.

9 NON-RETURN VALVE

High quality polypropylene non-return injection valve.

B Balanced pH Control Display



1 POOL pH

This is the readout of the current pH of your pool.

2 SET POINT

The **B Balanced pH Control** maintains the pool pH at the programmed Set Point.

3 INFORMATION LINE

This is where **B Balanced pH Control** indicates helpful messages and warnings, so you know what's happening at all times.

pH is OK.....The current pH of the pool is within the Set Point. No dosing is required at this time.

Adding Acid (or Base)The **B Balanced pH Control** is operating the dosing pump to add acid or base to correct the pH of the pool back to the Set Point. The default setup of the **B Balanced pH Control** is to add acid.

pH Alert! Reset:EnterThe pH of the pool has been above the Set Point for 4 hours or more, without returning to the Set Point. Press Enter to reset the alert timer.

24 Hr Delay.....The user has selected the 24 Hour Delay function. This is normally used when buffer or other chemicals have been added to the pool, which can temporarily change pool pH. The 24 Hour Delay function prevents excessive usage of acid or base.

Acid (or Base) Pump is Off....The user has set the dosing pump to being totally off, regardless of the pool pH reading.

Mixing Time Delay.....After the dosing pump has added a quantity of acid or base, the **B Balanced pH Control** will switch it off for some time. This allows the added acid or base to mix through the pool before adding more.

Cool Squeeze TubeThe dosing pump has stopped for a short time to allow the squeeze tube to cool down.

Startup Time DelayThe **B Balanced pH Control** has just been switched on, and is waiting for its pH reading to stabilise, before doing any automatic control.

pH is Out of Range.....The **B Balanced pH Control** has detected that the pool pH reading is extreme and needs to be checked.

pH Calibration DueIt has been 12 months since the last time the **B Balanced pH Control** was calibrated. Calibration ensures that pH readings are accurate.

Change Pump CassetteThe dosing pump has operated for 50 hours or more, which is time for the pump cassette to be replaced. This is important maintenance.



Acid Safety & Dilution

Brauer Swim recommends using pre-diluted acid purchased from your reputable pool shop or service agent.

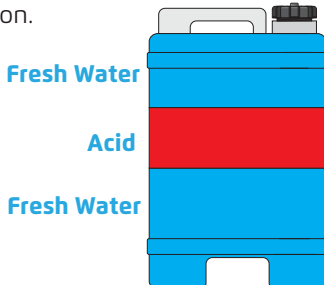
Alternatively, this section provides information on the safe handling and dilution of acid to use with your B Balanced pH Control. Please take the time to read and understand this section, to prevent injury or illness due to acid spillage.

Safety Information

- Dilute acid in a well ventilated area, preferably outdoors.
- Have a supply of fresh running water (e.g. a garden hose) readily to hand, in case of spillage.
- Wear protective clothing, safety goggles and gloves when diluting acid.
- Use only a Dangerous Goods certified drum. Your pool store can advise on this.
- If an acid spillage does occur, wash down well with copious amounts of fresh water immediately. **Seek Medical advice if any acid burn has occurred or if breathing is affected.**

Acid Dilution Procedure

1. DO NOT add acid into a drum that previously contained liquid chlorine, until that drum has been thoroughly rinsed three times with fresh water.
2. Fill a 20 or 25 Litre dangerous goods certified drum to around half way with fresh water.
3. Add 5 Litres of concentrated Hydrochloric, Muriatic or Non-Fuming acid to the drum. Pour slowly to prevent spillage.
4. Top up the drum with more fresh water. Do not overfill.
5. Replace the drum lid and swish around to mix the acid well with the water. Keep this drum lid fitted until the diluted acid drum is in position.



Additional Information

- Always use acid to at least 3 parts water to 1 part acid. Damage from undiluted or insufficiently diluted acid is not covered by the warranty.
- Always add acid to water. Never add water to acid.
- The acid drum must be below the level of the non-return valve in the pH Tee when installed. This prevents acid syphoning into the pipeline.
- Fit the Acid Drum label supplied with your **B Balanced pH Control** to your drum of diluted acid. This will identify its contents and shows the dilution instructions.



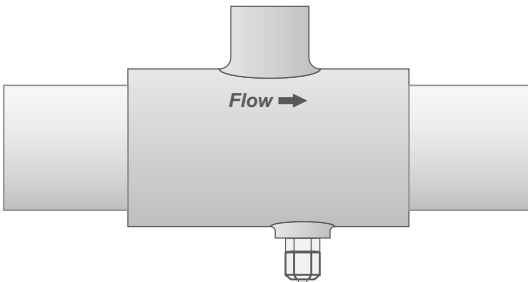
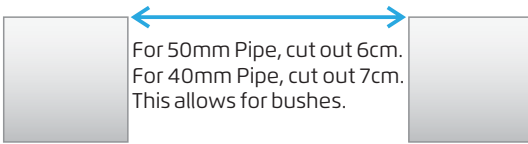


pH Tee Installation

Install the pH Tee first, so that the glue can set while you are installing the B Balanced pH Control unit itself.

Pre-Installation Checklist

- You will require a saw suitable for cutting PVC pipe, PVC Primer and PVC Glue.
- Install the pH Tee after the filter, before any sanitation equipment, but after heating equipment.
- The pH Tee must be fitted to a horizontal section of pipe, so that the pH Sensor is within 45° of vertical (with the glass bulb pointing downwards).
- The pH Tee should be installed before an Ozone venturi, Salt Chlorinator cell, Electro Oxidizing Cell or Liquid Chlorine injection point.
- For installations into 40mm Pipe, a pair of 50x40 mm reduction bushes have been supplied. Glue these into the pH Tee before installing the Tee.
- Check the Water Flow direction arrows on the pH Tee label, and ensure that it is installed in the correct direction.



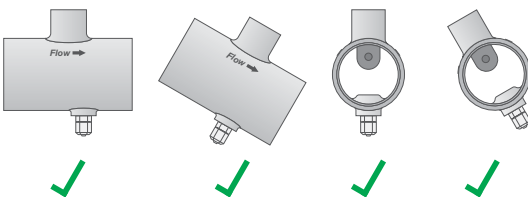
CUT PIPE

The pH Tee must be fitted to the return to pool pipe, where the water is clean and the pressure is low.

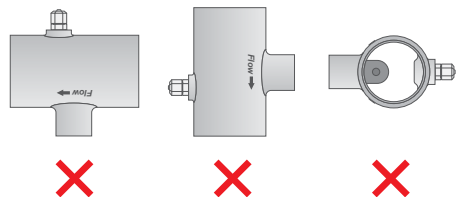
GLUE IN pH TEE

- Use PVC primer on all surfaces to be glued.
- Use suitable PVC pressure glue for joints.
- Ensure Water Flow arrows are pointing in the correct direction.
- pH Sensor must be within 45° of vertical.

These examples are all correct:



These are incorrect:





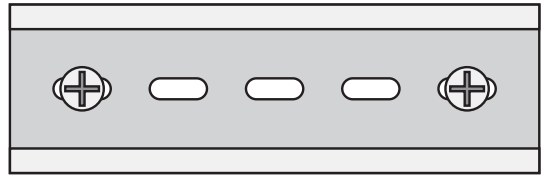
B Balanced pH Control Installation

Pre-Installation Checklist

- The **B Balanced pH Control** unit MUST be mounted vertically, with the cables at the bottom, in order to be weather resistant. Any water ingress due to the unit being incorrectly mounted is not covered by warranty.
- Check the mounting bracket of the Brauer Swim system with which your **B Balanced pH Control** is being installed. If it has an extension for mounting the **B Balanced pH Control**, then you do not need to install the mounting rail supplied with the **B Balanced pH Control**.
- Choose a position that will allow the cable from the pH Sensor to reach the **B Balanced pH Control** without straining, and power lead to reach the outlet on the Brauer Swim system. The dosing pump tubes must also be able to reach the chemical drum and the pH Tee.
- Ensure that the **B Balanced pH Control** is protected from direct sunlight and weather. Although the unit has a weather resistant design, damage from long term exposure is not covered by the warranty.
- Do not connect the **B Balanced pH Control** power lead to the Brauer Swim outlet until all installation steps are complete.

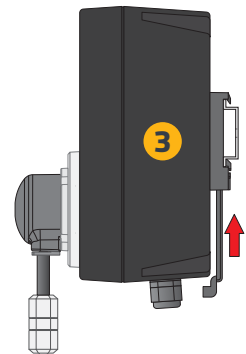
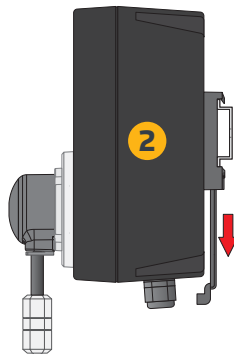
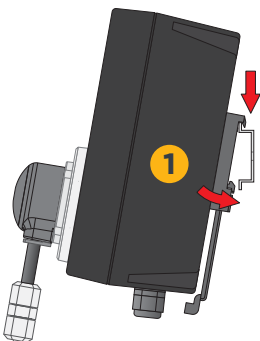
INSTALL MOUNTING PLATE

Install the mounting plate level in the desired location. Screws and wall plugs are provided.



MOUNT B BALANCED pH CONTROL

- 1 Hook the **B Balanced pH Control** mounting clip onto the top rail of the mounting plate.
- 2 Pull the mounting clip down pulling the **B Balanced pH Control** against the bottom rail of the mounting plate.
- 3 Allow the mounting clip to lock in place behind the bottom rail.

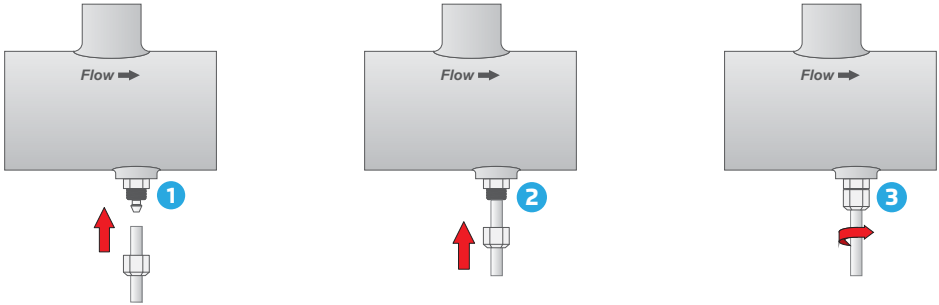




Tube Installation

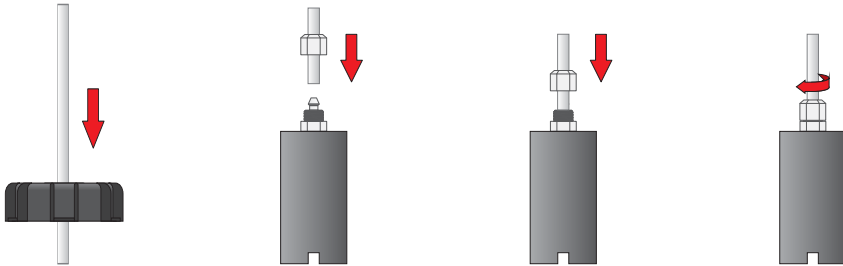
pH TEE TUBE INSTALLATION

- 1 Remove the nut from the non return valve on the Tee piece. Slip the Nut over the tube.
- 2 Push the tube firmly onto the tube fitting.
- 3 Tighten the nut over the tube. Tighten firmly with fingers. If the tubing can still be easily pulled out, use a tool to tighten an extra 1/2 turn to ensure that it is securely fastened.



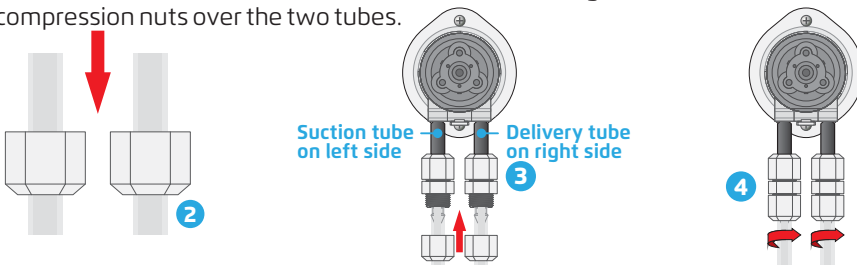
DRUM WEIGHT TUBE INSTALLATION

1. Push the end of the drum weight tube through the drum lid that was supplied with the **B Balanced pH Control**.
2. Fit the tube onto the drum weight tube fitting in the same way as described in the pH Tee Tube Installation section above and illustration below.



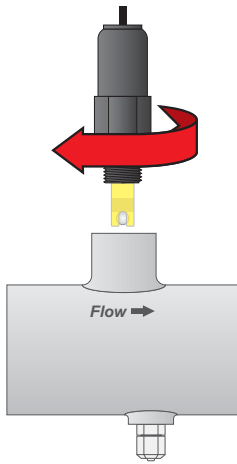
DOSING PUMP TUBE INSTALLATION

1. Cut Suction and Supply tubes to required length from the single length of clear PVC tube supplied with the **B Balanced pH Control**.
2. Fit compression nuts over the two tubes.
3. Push Suction and Supply tubes onto dosing pump fittings.
4. Tighten the nut over the tube. Tighten firmly with fingers.





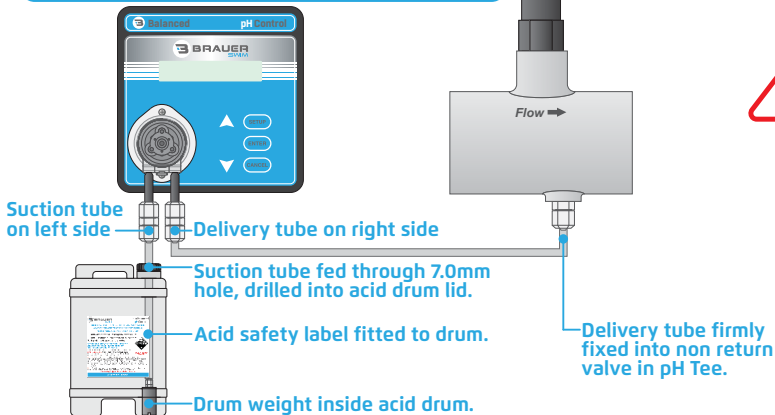
pH Sensor Installation



1. Carefully remove the protective cap from the tip of the sensor.
2. Screw the pH Sensor into the pH Tee thread. Tighten firmly by hand. **DO NOT OVERTIGHTEN. DO NOT USE A TOOL.**
3. After the pH Sensor is installed in the pH Tee, connect plug on the pH Sensor cable into the sensor socket on the **B Balanced pH Control**. Push the plug into place and 1/4 turn clockwise to lock it into place.



Completed Installation

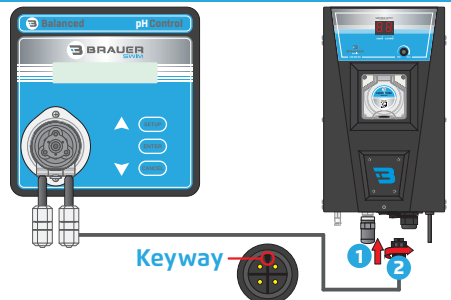


DO NOT fit suction tube directly into neat acid container. See page 6 for Acid Dilution information.



Connect Power Lead

1. Locate the **B Balanced pH Control** power socket on your Brauer Swim system. Remove the dust cover. The keyway of the power socket is towards the front of the unit. Align the **B Balanced pH Control** plug with the keyway of the socket and push in.
2. Screw the retaining nut of the plug clockwise until finger tight to lock the plug into place to seal.



All installation steps are now complete. It is recommended that you use the Quick Dose function with 1 Litre of fresh water to test the system for leaks before using your pH Control unit with acid.



B Balanced pH Control Settings

- Press **Setup** to enter the user-friendly menu system.
- Press **▲** and **▼** to scroll through menu choices, then press **Enter** to select the required option.
- Press **Enter** to save changes.
- Press **Cancel** to quit without saving changes at any screen.
- All setup screens time out if no key has been pressed for 30 seconds. Any changes will not be saved.

Setting the Mode

- Press **Setup** to enter the user-friendly menu system, then press **▲** and **▼** until **Mode** is selected. The current mode is shown in brackets.

Setup

```
Mode (Auto Control)
Scroll:⬆️ Set:Enter
```

- Press **Enter** to go to the **Mode** menu.

Enter

```
Mode: Auto Control
Set:⬆️ Save:Enter
```

- Press **▲** and **▼** to select between the Mode settings:

Auto Control ... The dosing pump will add acid or base when the pH is outside the Set Point.

Standby The dosing pump is switched off and will not add any acid or base automatically.

24Hr Delay.... The dosing pump is switched off for 24 hours, to allow buffer or other chemical to mix and stabilise.

▲ ▼

```
Mode: Standby
Set:⬆️ Save:Enter
```

▲ ▼

```
Mode: 24Hr Delay
Set:⬆️ Save:Enter
```

- Press **Enter** to save the selection, or press **Cancel** to quit without saving.

Adding a Quick Dose of Chemical

- Use this function if you need to manually add a dose of acid or base to the pool
- Press **Setup** to enter the user-friendly menu system, then press **▲** and **▼** until **Quick Dose** is selected.
- Press **Enter** to go to the **Quick Dose** menu.
- Press **▲** and **▼** to select the number of litres of acid or base to dose. The range of settings is 1 to 5 litres.
- Press **Enter** to start dosing, or press **Cancel** to quit.
- The **B Balanced pH Control** counts down as it doses.
- Every 4 minutes of dosing pump operation, the **B Balanced pH Control** will switch it off for 1 minute, to allow the squeeze tube to cool down. This extends squeeze tube life.

Setup

```
Quick Dose
Scroll:⬆️ Set:Enter
```

Enter

```
Quick Dose: 0L
Set:⬆️ Save:Enter
```

▲ ▼

```
Adding Acid
4.9 of 5 Litres
```

```
Cooling Squeeze Tube
4.2 of 5 Litres
```



B Balanced pH Control Settings

Setting the pH Set Point

The default pH Set Point of 7.6 is suitable for most pool systems. You should only change this setting if advised by a pool professional.

- Press **Setup** to enter the user-friendly menu system, then press **▲** and **▼** until **pH Set Point** is selected. The current Set Point is shown in brackets.
- Press **Enter** to go to the **pH Set Point** menu.
- Press **▲** and **▼** to set the required pH Set Point.
- Press **Enter** to save the new setting, or press **Cancel** to quit without saving.

Setup

pH Set Point (7.6pH)
Scroll:▲▼ Set:Enter

Enter

pH Set Point: 7.6pH
Set:▲▼ Save:Enter

Pool Size Setting

The pH correction demand and pool turnover time is different from pool to pool, even when two pools are the same size. The Pool Size setting will be suitable for the majority of pools. However, it may be necessary to adjust this during the first few days or weeks of operation, as detailed in this section.

- Press **Setup** to enter the user-friendly menu system, then press **▲** and **▼** until **Pool Size** is selected. The current Pool Size setting is shown in brackets.
- Press **Enter** to go to the **Pool Size** menu.
- Press **▲** and **▼** to set the required Pool Size.
- Press **Enter** to save the new setting, or press **Cancel** to quit without saving.

Setup

Pool Size (40,000L)
Scroll:▲▼ Set:Enter

Enter

Pool Size: 40,000L
Set:▲▼ Save:Enter

NOTES

If the **B Balanced pH Control** does not keep up with acid or base demand, and the Alarm sounds, increase the Pool Size setting by one step and check in 2 days.

If the **B Balanced pH Control** overdoses too much acid or base, reduce the Pool Size setting by one step and check in 2 days.

New concrete pools have an extremely high acid demand for the first few months. It may be necessary to enter a Pool Size up to 50% more than the true size of the pool if your **B Balanced pH Control** is not keeping up with acid demand during this initial period. The setting can be reduced again 1 to 3 months later.



B Balanced pH Control Settings

Enabling or Disabling the pH Alert Function

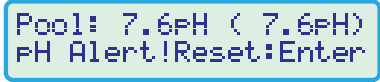
The **B Balanced pH Control** will sound an alarm and display an alert if the pH has been outside the set point for 4 hours or more.

If this function is disabled, the alarm will never be triggered and the **B Balanced pH Control** may over dose acid or base. Only advanced users should change this setting, and only as a temporary measure.

- Press **Setup** to enter the user-friendly menu system, then press **▲** and **▼** until **pH Alerts** is selected. The current Set Point is shown in brackets.
- Press **Enter** to go to the **pH Alerts** menu.
- Press **▲** and **▼** to select between On and Off.
- Press **Enter** to save the selection, or press **Cancel** to quit without saving.

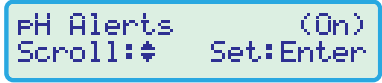
When the pH Alert is Triggered

When the pH Alert is triggered, the **B Balanced pH Control** will display the alert message and sound the beeper.

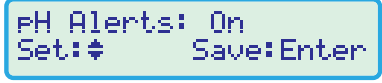


- The Dosing Pump will now be disabled, and will not operate again until the Alert has been reset.
- Press **Enter** to reset the pH Alert.
- Refer to the list of possible causes and fixes on this page, to rectify the condition that caused the alert to be triggered.

Setup



Enter



Possible causes and solutions for the pH Alert being triggered:

- Cause**Very high acid demand in new concrete pool.
 - Fix**Increase Pool Size Setting to a higher value until the acid demand settles to normal amounts.
 - Cause**Acid or Base drum empty.
 - Fix**Refill drum with water and acid or base as per instructions on page 6.
 - Cause**Pool Size Setting is too low or too high.
 - Fix**See page 12 for information on how to change Pool Size Setting.
 - Cause**pH Reading is inaccurate.
 - Fix**Re-calibrate pH Sensor.
 - Cause**pH Sensor broken or faulty.
 - Fix**If re-calibration is not possible, then replace pH Sensor.
 - Cause**Pump is not pumping acid correctly.
 - Fix**Check all tube fittings for leakage. Re-fit or replace as necessary.
- Check squeeze tube inside pump cassette for leakage and replace if necessary.



pH Sensor Calibration

The **B Balanced pH Control** will display a reminder to calibrate the pH Sensor approximately every 12 months:

pH Calibration Due

The pH Sensor should be calibrated to ensure that the readout is correct. Calibration is simply the process of placing the pH Sensor into a solution of known pH, and adjusting the readout to that value.

The **B Balanced pH Control** can be calibrated in one of two ways:

1. Inline Calibration

This is done by obtaining an accurate pH measurement of the pool water and adjusting the readout to that value.

2. pH7.0 Buffer Calibration

This involves removing the pH Sensor from the pH Tee, placing it into a pH7.0 Buffer solution, and adjusting the readout to 7.0.

Inline Calibration

1. Measure the pH of the Pool

Set the **B Balanced pH Control** to Standby or 24Hr Delay mode an hour or more before measuring the pH of the pool. Do not change back to Auto Control mode until after pH calibration is completed.

Ensure that the pool filtration pump has been running and no acid has been added for at least 1 hour prior to doing an Inline Calibration. This is to ensure that the pH level is stable throughout the whole pool.

Measure the pH of the pool with a good quality, calibrated pH meter. Alternatively, take a sample of pool water to a pool shop which has an electronic pool balance measurement system. A standard pool pH test kit is NOT accurate enough to be relied upon for pH calibration.

2. Calibration Procedure

- Press **Setup** to enter the user-friendly menu system, then press **▲** and **▼** until **Calibrate pH Sensor** is selected.
- Press **Enter** to go to the **Calibration** screen.

Cal: 7.6pHx (7.7pH)
Set:⬇ Cal:Enter

The current reading is displayed in brackets. The flashing "X" indicates that the reading is not yet stable. DO NOT calibrate until the "X" changes to a "✓"

Cal: 7.6pH✓ (7.7pH)
Set:⬇ Cal:Enter

- Press **▲** and **▼** to set the "Cal:" pH value to the pH of the pool, as measured in step 1.
- Press **Enter** to calibrate the pH Sensor, or press **Cancel** to quit without calibrating.
- Set the **B Balanced pH Control** back to Auto Control mode.

Calibration Failure

If pH calibration fails, the **B Balanced pH Control** will display this message:

pH Calibration Fail
Check Handbook

- Clean the pH Sensor as per the troubleshooting section, then retry calibration.
- If the calibration failure persists, the pH Sensor will most likely need to be replaced.

pH7.0 Buffer Calibration is on the next page.



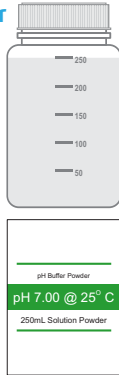
pH Sensor Calibration

pH7.0 Buffer Calibration

The **B Balanced pH Control** is powered from your Brauer Swim unit. The **B Balanced pH Control** will need power for calibration, but with the pH Sensor removed from the pH Tee, the pool pump must not be running. You will therefore need to unplug the pool pump from the Brauer Swim unit.

1. Prepare pH7.0 Calibration Buffer

- A sachet containing 2 ziplock bags of salt was supplied with your system. Simply pour BOTH sachets into the 250mL bottle and fill to the 250mL mark with deionised or distilled water. Shake well until all salts have dissolved.
- This solution will last up to 6 months after it has been made, providing it is not contaminated and is stored in a cool, dark place

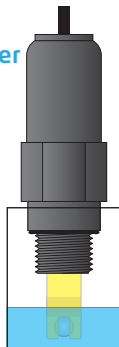


2. Remove the pH Sensor from the Tee

- Disconnect the pH Sensor to avoid straining the cable and plug when removing the sensor from the pH Tee. Unscrew the sensor completely from the Tee.
- Reconnect the pH Sensor to the unit.
- Rinse the sensor well in clean water. De-ionized or distilled water is ideal, but tap water will suffice.

3. Place pH Sensor into pH7.0 Buffer

- Decant a small amount of pH7.0 buffer into a clean cup. Place the pH Sensor into this buffer, so it is immersed to 15mm or more, as per the diagram on the right.
- DO NOT place the pH Sensor directly into the 250mL bottle of pH7.0 buffer.



4. Calibration Procedure

- Switch the **pH Control** on by activating the pool pump output of the Brauer Swim unit.
- Press **Setup** to enter the user-friendly menu system, then press **▲** and **▼** until **Calibrate pH Sensor** is selected.
- Press **Enter** to go to the **Calibration** screen.

```
Cal: 7.6pHx ( 7.7pH)
Set:⬇ Cal:Enter
```

The current reading is displayed in brackets. The flashing "X" indicates that the reading is not yet stable. DO NOT calibrate until the "X" changes to a "✓"

```
Cal: 7.6pH✓ ( 7.7pH)
Set:⬇ Cal:Enter
```

- Press **▲** and **▼** to set the "Cal:" pH value to exactly **7.0**.
- Press **Enter** to calibrate the pH Sensor, or press **Cancel** to quit without calibrating.

5. Re-fit pH Sensor and Power Connections

- Disconnect the pH Sensor from the **B Balanced pH Control** to avoid straining the cable and plug when screwing into the pH Tee. Re-fit into the pH Tee. Re-connect the pH Sensor to the unit when done.
- Re-connect the pool pump to the Brauer Swim power outlet.
- Switch your pool equipment back on.

Calibration Failure

If pH calibration fails, the **B Balanced pH Control** will display this message:

```
pH Calibration Fail
Check Handbook
```

- Clean the pH Sensor as per the troubleshooting section, then retry calibration.
- If the calibration failure persists, the pH Sensor will most likely need to be replaced.



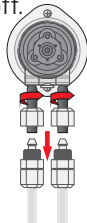
Changing Pump Cassette

The **B Balanced pH Control** monitors the running time of the dosing pump and will display a reminder to replace the pump cassette when this time exceeds 50 hours.

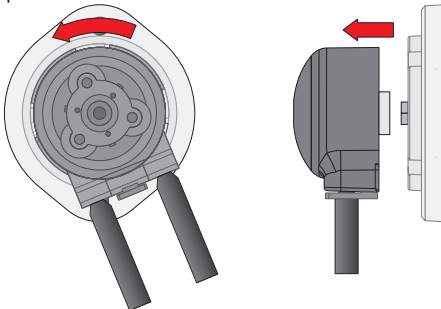
Change Pump Cassette

- The **B Balanced pH Control's** dosing pump squeeze tube is contained in a complete replaceable cassette, so replacing the squeeze tube is a simple matter of replacing the cassette.
- Use the Quick Dose function to pump 1 Litre of fresh water through the system. This will ensure that all acid or base has been flushed out and will make it safe to handle.
- Switch off the **B Balanced pH Control** and ensure that the pool pump is also off.

- Removing the clear PVC Suction and Supply tubes is a reversal of the tube fitting instructions on Page 9.

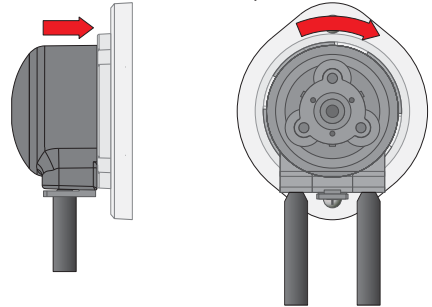


- Turn the pump cassette anti-clockwise around 1/8 of a turn. When you feel it stop, pull the cassette off the base.

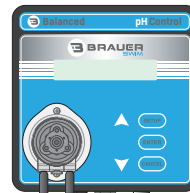


- Push the replacement dosing pump cassette onto the pump base. Rotate it a few degrees either way to make the axle in the pump base align with the hole in the back of the cassette. Once it has engaged, push the cassette onto the base at the angle shown at the top, right of this page.

- Turn the cassette clockwise around 1/8 of a turn until it clicks into place.



- Refit the clear PVC Suction and Supply tubes. Suction is on the left and Supply is on the right. Refer to tube fitting instructions on page 9.



Suction tube on left side (From Drum) Supply tube on right side (To pH Tee)

- Switch the **B Balanced pH Control** back on.

Resetting the Pump Cassette Reminder

- Press **Setup** to enter the user-friendly menu system, then press **▲** and **▼** until **Maintenance** is selected.
- Press **Enter**, then select **Cassette** from the **Maintenance** menu. The total pump operating hours is displayed on the right.

Cassette (50.00Hr)
Scroll: ⬆️ Set: Enter

- At the **Change Pump Cassette** screen, press **Enter** to reset the Pump Cassette hours to zero. Press **Cancel** to exit if the pump cassette was not replaced.

Change Pump Cassette
No: Cancel Yes: Enter



Troubleshooting

Symptom	Possible Causes and Remedies
Unstable or inaccurate pH readings	<p>pH Sensor is dirty.</p> <ul style="list-style-type: none"> • Disconnect pH Sensor from the B Balanced pH Control, then unscrew sensor from the pipe. • Wipe the glass bulb with a soft tissue soaked with methylated spirits. • Soak the tip of the sensor in diluted Hydrochloric acid (for example, from your B Balanced pH Control diluted acid drum). • Rinse the pH Sensor thoroughly in clean water. • Screw sensor back into pipe and re-connect sensor to the unit.
	<p>pH Sensor needs to be re-calibrated.</p> <ul style="list-style-type: none"> • Clean pH Sensor as per procedure above. • Re-calibrate pH Sensor as per details on pages 14 and 15.
	<p>Pool water is very pure and has low conductivity.</p> <ul style="list-style-type: none"> • Add one bag of pool salt per 50,000 Litres of pool water.
pH reading cannot be calibrated	<p>pH Sensor is dirty.</p> <ul style="list-style-type: none"> • Follow the pH Sensor cleaning procedure above.
	<p>pH Sensor is faulty.</p> <ul style="list-style-type: none"> • Replace pH Sensor.
pH reads around pH7 without changing	<p>Short circuit in pH Sensor BNC Plug or Socket.</p> <ul style="list-style-type: none"> • Disconnect pH Sensor plug from socket. Dry out with a hair dryer or allow to air dry. Reconnect and re-check. • If problem persists, return pH Sensor to have connector replaced, or replace the pH Sensor.
pH reads around pH4 to 5 without changing	<p>Glass bulb or internal stem of pH Sensor is cracked.</p> <ul style="list-style-type: none"> • Replace pH Sensor.
Unit does not power up	<p>Faulty Unit</p> <ul style="list-style-type: none"> • Faulty B Balanced pH Control main unit. Return for repair.
Unit is not adding acid when dosing pump is operating	<ul style="list-style-type: none"> • Check that the B Balanced pH Control diluted acid drum is not empty. • Check that all suction and output tubes are fitted correctly, with no leakage. • Check that squeeze tube inside pump cassette is not leaking. <p>WARNING : IF ANY ACID HAS LEAKED OUT OF TUBES, WASH DOWN THE AREA WITH FRESH WATER IMMEDIATELY. TAKE THE LID OFF THE PUMP, REMOVE SQUEEZE TUBE AND WASH OUT WITH FRESH WATER IF SQUEEZE TUBE WAS LEAKING.</p>
Alarm sounds due to pH being too low	<p>Pool Size Setting is set too high.</p> <ul style="list-style-type: none"> • Reduce the Pool Size Setting by one level and check in 2 days.
Acid Pump turns, but acid is not flowing.	<p>Leaking or worn squeeze tube and/or rollers.</p> <ul style="list-style-type: none"> • Tighten Acid Pump fittings further or replace fittings. • Replace dosing pump cassette as needed (see page 16).

IF YOU NEED TO RETURN YOUR **B BALANCED pH CONTROL** FOR SERVICE OR REPAIRS AT ANY TIME, PLEASE USE THE QUICK DOSE FUNCTION (PAGE 11) TO DOSE 1 LITRE OF FRESH WATER THROUGH THE SYSTEM BEFORE SENDING BACK. THIS WILL STOP ACID LEAKING FROM THE PUMP DURING TRANSPORT (WHICH WOULD DAMAGE YOUR UNIT OR THE PACKAGING, VOIDING WARRANTY), AND IS ALSO A SAFETY HAZARD FOR OUR TECHNICIANS.

❓ Troubleshooting

Alert Messages	Possible Causes and Remedies
Pool: 7.6pH (< 7.6pH) pH Alert!Reset:Enter	<p>pH has been outside of Set Point for more than 4 hours of operation.</p> <ul style="list-style-type: none"> • Please refer to page 13 for a complete list of possible causes and remedies when the pH Alert message is flashing. • The B Balanced pH Control will not attempt any further acid addition until the alarm is cleared. Press Enter to clear the alarm after rectifying the issue.
Pool:13.0pH (< 7.6pH) pH is Out of Range	<p>pH reading is above pH12 or below pH2.</p> <ul style="list-style-type: none"> • This alert is displayed immediately if the pH reading goes outside the range of pH2 to pH12. A beeper also sounds. This alert can only be cleared when the pH returns to normal range. • Check the actual pH of the pool with an independent test. • Attempt to calibrate the B Balanced pH Control (see pages 14 & 15). • If calibration fails and the issue persists, the pH sensor may require replacement.
Reminder Messages	Action Required
pH Calibration Due	<ul style="list-style-type: none"> • This reminder is displayed 12 months after the last successful pH Calibration. Calibrate the pH Sensor as per pages 14 and 15.
Change Pump Cassette	<ul style="list-style-type: none"> • This reminder is displayed when the peristaltic dosing pump has exceeded 50 hours of operation since the last time the peristaltic pump cassette was changed. • Change the Pump Cassette as per page 16.
General Messages	Explanation of Message
B Balanced pH v2.0 (c) 2021	<ul style="list-style-type: none"> • This message is displayed each time the unit is switched on. • If you need to contact us for technical support, we may ask you the software version number ("v2.0" in this example).
Squeeze Tube:0:00Hr Calibrate in 365days	<ul style="list-style-type: none"> • This message is displayed each time the B Balanced pH Control is switched on, after the version screen above. • On this screen, the unit displays the accumulated dosing pump operating time, and number of days since the last pH calibration.
Hardware Fail Messages	Explanation of Message
Int clock error Cancel: Restart	<ul style="list-style-type: none"> • The B Balanced pH Control has not been able to obtain data from the internal clock chip. • Press Cancel to restart, or switch the unit off for 5 seconds, then back on again. If problem persists, return the unit for repair.
pH input error Cancel: Restart	<ul style="list-style-type: none"> • The pH Control has not been able to obtain data from the pH input. • Press Cancel to restart or switch the unit off for 5 seconds, then back on again. If the problem persists, return the unit for repair.



Warranty

Ozone 1 Pty Ltd, trading as Brauer Swim (“Brauer Swim”) guarantees the **B Balanced pH Control** (including inbuilt peristaltic pump) to be free from defects in material and workmanship when subjected to normal use and service. This is a replacement guarantee, whereby the faulty device is returned to Brauer Swim, or Authorised Dealer, freight prepaid within two years from the date of purchase. A further one year back to base warranty is provided, in addition to this two year period, whereby the faulty device is returned to Brauer Swim for repair, freight prepaid. The faulty device will be repaired and returned, free of charge.

Brauer Swim provides the same replacement guarantee for the pH Sensor, but limited to a period of one year from the date of purchase.

The squeeze tube inside the peristaltic pump, valves and fittings are not covered by this guarantee.

Acid must be diluted as instructed. Wear and damage caused by the use of undiluted acid is not covered by this warranty.

There are no expressed or implied warranties which extend beyond the face hereof, and Brauer Swim is not liable for any incidental or consequential damages arising from the use or misuse of this product. This limited warranty does not apply to any injury, loss, damage, defect or malfunction of the product or failure to function resulting from any failure to operate the product in accordance with the directions contained in the operating instructions, failure to function resulting from any accidents, acts of God, tampering, abuse, acts, omissions, or negligence by anyone other than Brauer Swim, including but not limited to such damage or injuries resulting from improper installation. Damage from excessive concentration of one or more chemicals is not covered by this warranty.

This limited warranty shall apply only to the Customer as an original purchaser. It is the customer's responsibility to follow safety regulations and laws regarding electrical installation. Shipping damage is not covered by this warranty.

No claims will be recognised without the proof of purchase. This warranty becomes invalid if unauthorised person or persons attempt modifications or repairs.

Any dispute between customer and Brauer Swim must be conducted in Queensland, Australia.



Contact Us

Brauer Swim
Unit 3, 89 Spencer Rd
Nerang QLD 4211
AUSTRALIA

Tel 1300 696 631
Email..... info@brauerindustries.com
Web www.brauerswim.com
ABN..... 99 109 648 722



