

### OmniLogic®

#### Clear MSP Calibration

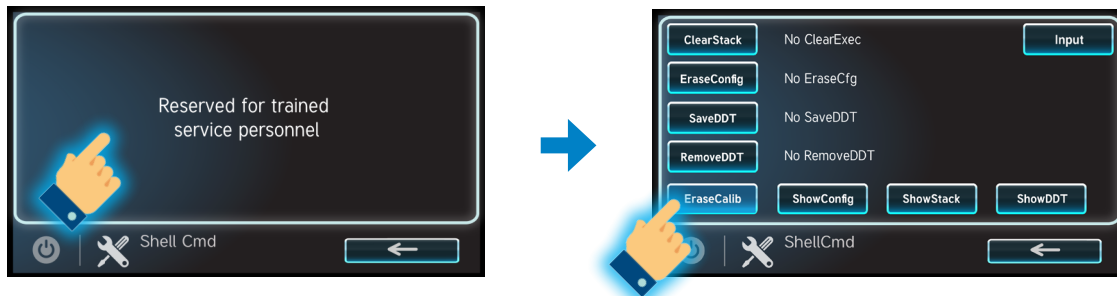
Because the MSP Display is a touchscreen, sometimes the display will need to be re-calibrated to correct any lagging or navigational inaccuracies that may develop over time. Use the steps provided to clear the MSP calibration file and reboot the system. This process is recommended if you are having difficulty with icon or text box selection.

1.



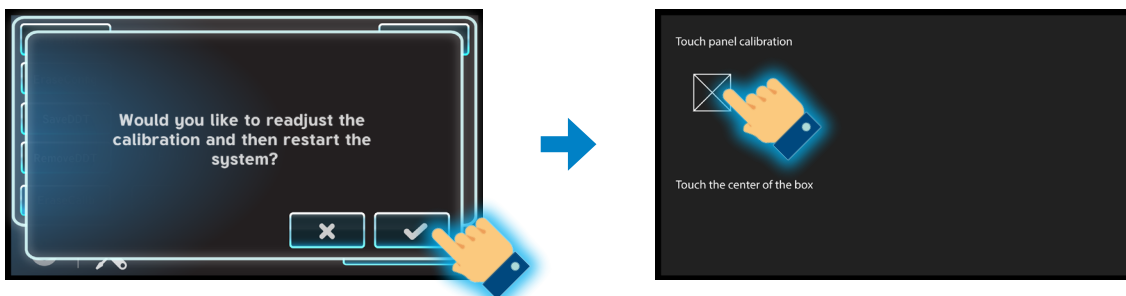
On the right side of the screen hit the right arrow until the “Config” Icon appears, select that icon. Scroll to the right until “Shell Command” appears and tap to select it.

2.



Tap anywhere on the screen to advance past the warning screen. Locate and tap on “EraseCalib”. This will prompt a question screen.

3.



Confirmation is required to continue with calibration, press the check mark to continue. A series of five boxes will appear, touch the centre of each box to calibrate the screen. Once calibration is complete, the system will automatically reboot in a power cycle.