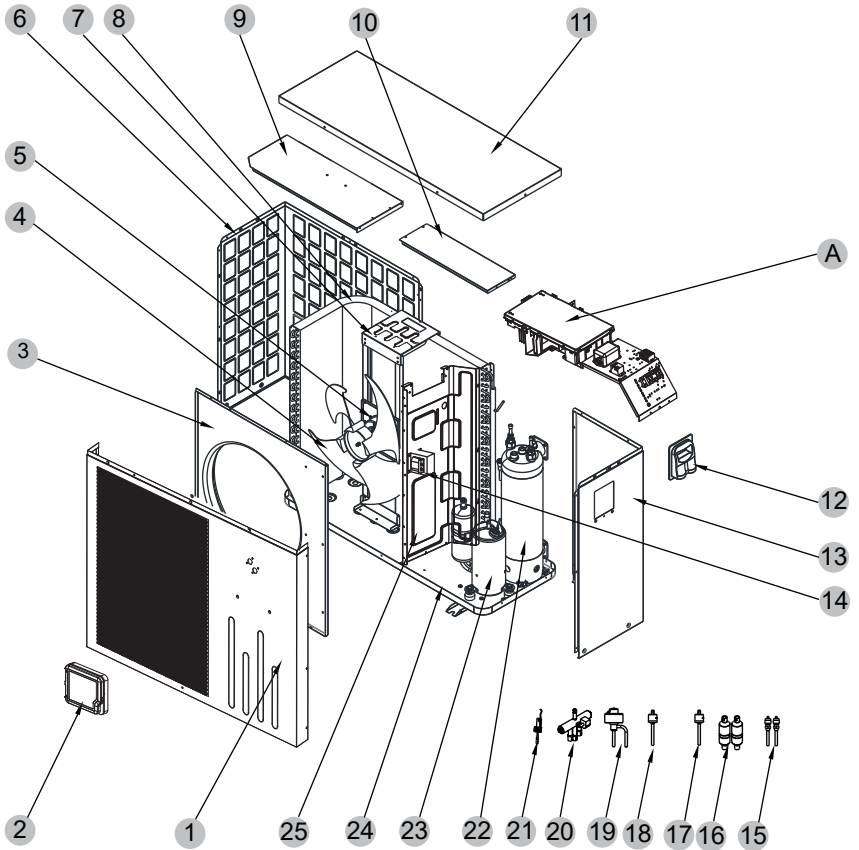


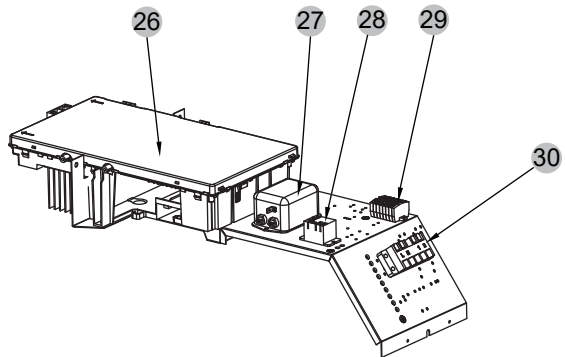
Exploded Diagram

Model and code: (PASRW050-P-BP6II-AT 1H-PASRW050EE19)

1 Complete machine structure explosion diagram



2 Electrical control structure explosion diagram



Exploded Diagram

No.	Code	Name	Specifications	Qty
1	807000007260	Front panel	Black 9005	1
2	20000-220068	Waterproof box	PC top cover + PC bottom cover	1
3	807000007261	Wind board	Black 9005	1
4	301030-00000001	Fan Blade	Φ510×160-Φ12(10)×3(SW)	1
5	20000-330132	Fan motor	ZWS75-A	1
6	807000007258	Back panel	Black 9005	1
7	80718434	Fan Motor Support	Black 9005	1
8	80600078	Fin heat exchanger	714×353×800×Φ7×1.5 2.0	1
9	80700327	Supporting Plate	Black 9005	1
10	80700701	Supporting Plate 2	Black 9005	1
11	807000007259	Top cover	Black 9005	1
12	32009-220029	Junction box	B-ABS	1
13	807000007257	Right panel	Galvanized plate	1
14	82500021	Reactance	EL205FN	1
15	20000-140150	Needle	40mm 1/2"	2
16	2004-1444	Filter	Φ9.7-Φ9.7 (Φ28) T2Y2	2
17	2001-3605	High pressure switch	3.2MPa/4.4MPa ±0.15	1
18	20000-360157	Low pressure switch	0.30MPa/0.15MPa ±0.05	1
19	81000013	Electronic expansion valve	DPF(B)2.2C-105	1
20	2004-1437	4-way valve	DSF-11E-1030	1
21	83000068	Flow switch	PSL-1 3/4	1
22	72300024	Titanium heat exchanger	Φ12.7×10m Φ160	1
23	80100046	Compressor	SVB220FLGMC-L	1
24	807000007256	Chassis	Black 9005	1
25	80719202	Middle Plate	Galvanized plate	1
26	823000000190	Integrated Inverter Board	2AC32126W01	1
27	2000-3257	Power Supply Filter	HT225-20-L8-H5	1
28	20000-360297	Electromagnetic Relay	HATF903AS30AC220 AC220V 30A	1
29	/	Terminal Block	/	1
30	4000-3901	Wiring Terminal Block	RS9101(450V~4mm2)	1