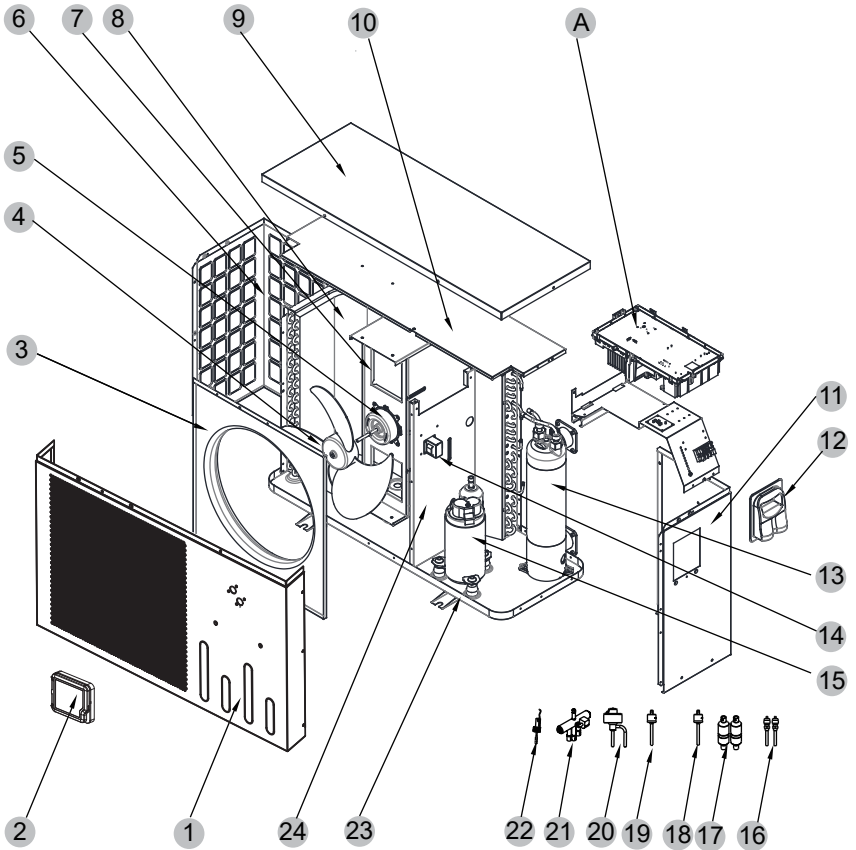


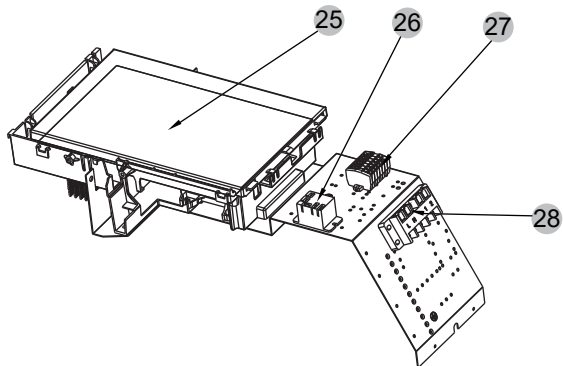
Exploded Diagram

Model and code: (PASRW030-P-BP6II-AT 1H-PASRW030EE12)

1 Complete machine structure explosion diagram



2 Electrical control structure explosion diagram



Exploded Diagram

No.	Code	Name	Specifications	Qty
1	807000006997	Front panel	Black 9005	1
2	20000-220068	Water Proof Box	PC top cover + PC bottom cover	1
3	807000007035	Wind board	Black 9005	1
4	301030-00000006	Fan Blade	$\Phi 405 \times 134 - \Phi 8(7) \times 3$	1
5	80200018	Fan motor	ZWS40-E51	1
6	807000006995	Back panel	Black 9005	1
7	80700218	Fan Motor Support	Galvanized sheet	1
8	80600043	Fin heat exchanger	$650 \times 245 \times 550 \times \Phi 7 \times 2 \text{ 2.0}$	1
9	807000006996	Top cover	Black 9005	1
10	80702824	Supporting Plate	Galvanized sheet	1
11	807000006994	Right panel	Black 9005	1
12	32009-220029	Junction box	B-ABS	1
13	72300014	Titanium heat exchanger	$\Phi 9.52 \times 7 \text{m } \Phi 110$	1
14	82500020	Reactance	EL165FN	1
15	20000-110448	Compressor	SVB140FCAMC	1
16	20000-140150	Needle	40mm 1/2"	1
17	20000-140178	Filter	$\Phi 9.7 - \Phi 9.7(\Phi 19) \text{ T2M}$	2
18	2001-3605	High pressure switch	$3.2\text{MPa}/4.4\text{MPa} \pm 0.15$	1
19	20000-360157	Low pressure switch	$0.30\text{MPa}/0.15\text{MPa} \pm 0.05$	1
20	81000011	Electronic expansion valve	DPF(B)1.65C-007	1
21	2004-1437	4-way valve	DSF-11E-1030	1
22	83000068	Flow switch	PSL-1 3/4	1
23	807000006993	Chassis	Black 9005	1
24	80700215	Middle Plate	Galvanized sheet	1
25	823000000191	Integrated Inverter Board	2AC32I27WO1	1
26	20000-360297	Electromagnetic Relay	HATF903AS30AC220 AC220V 30A	1
27	/	Terminal Block		1
28	4000-3901	Wiring Terminal Block	RS9101(450V~4mm ²)	1